



Carpenters Place, Clapham, SW4

3 bedroom flat - purpose built for sale

£650,000

Leasehold

Property Details

This spectacular three double bedroom, two bathroom apartment with a private terrace is set within a secure, modern building in a highly sought-after location. Positioned on a quiet residential cul-de-sac just moments from the vibrant Clapham High Street, this beautifully presented second-floor home offers over 1,000 square feet of internal living space. The heart of the property is an expansive open-plan living, kitchen, and dining area, ideal for both relaxing and entertaining. The sleek kitchen is fitted with integrated appliances, ample storage, and a breakfast bar. Large windows and glazed doors flood the space with natural light and open onto a south-east-facing private terrace, ready to enjoy come day or night, be it al-fresco hosting or soaking up the sun's rays. All three bedrooms are spacious doubles, situated quietly at the rear of the property to ensure privacy and restful sleep. The principal bedroom benefits from a modern en-suite bathroom, while all rooms feature excellent natural light and neutral décor, ready to be personalised. Just moments from Clapham North Tube and Clapham High Street Overground, with easy access to Stockwell, Brixton, a variety of cafés, shops, and the open green spaces of Clapham Common.

Council tax band E EPC rating B (82)

Features

- Three double bedrooms
- Two bathrooms
- Private terrace
- Secure modern building
- Over 1000 square feet of living space
- Clapham High Street on the doorstep
- Unrivalled convenient location for transport links
- Moments to Clapham North tube
- Brixton and Stockwell within walking distance
- Chain-free

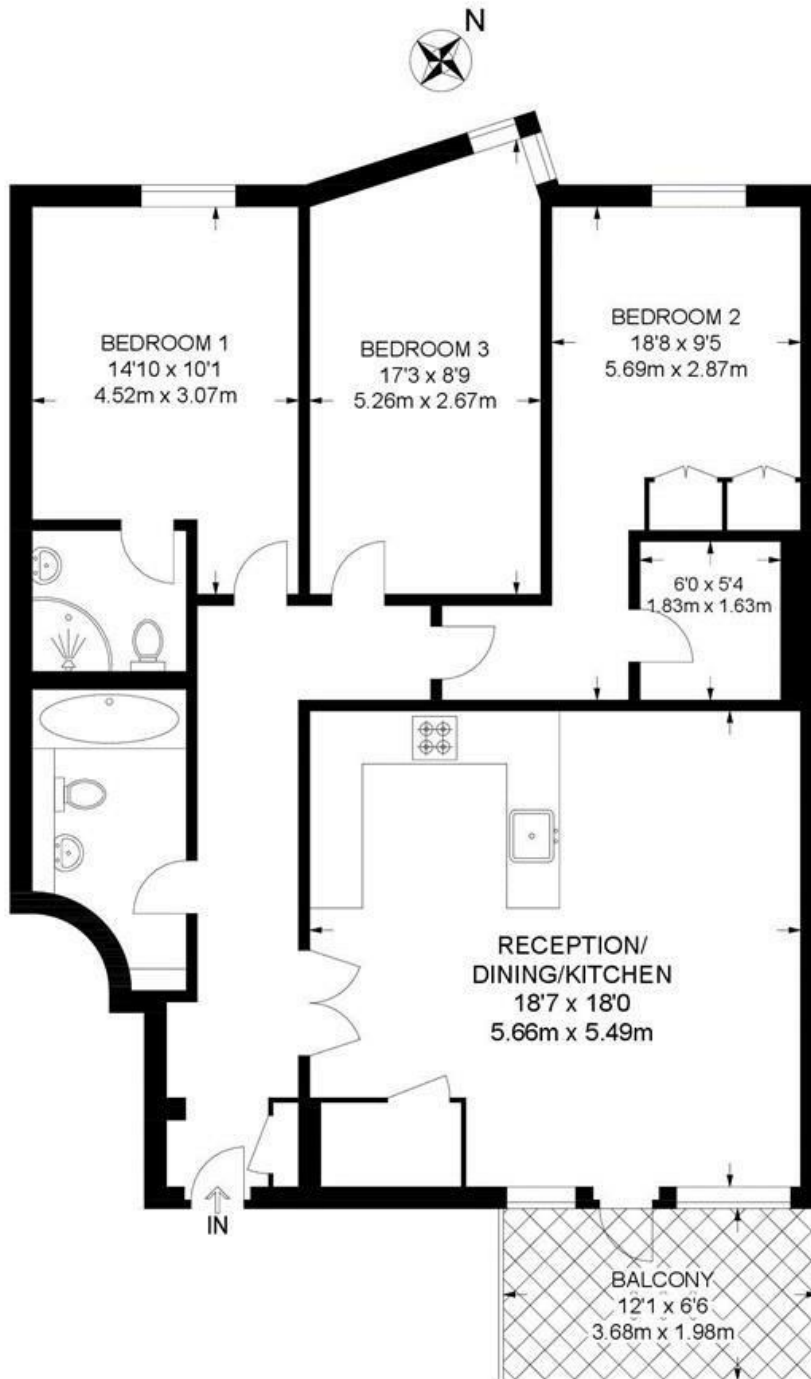




Carpenters Place, Clapham, SW4

Carpenters Place, SW4
3 Bedroom Flat

APPROXIMATE GROSS INTERNAL AREA: 1058 SQ FT / 98.3 SQ M



SECOND FLOOR



While we try our very best, floor plans are produced as a guide only and we take no responsibility for the precise accuracy with which any property is represented.

Carpenters Place, Clapham, SW4

